



**GeoVision® enables to extract, process and format all data**

**coming from APAGEO's data loggers:** pressuremeter (GeoSPAD® and GeoPAC®), drilling (EXPLOFOR®), dynamic penetrometer (APADYN®) and permeability test (LugeoTest®)

**The GeoVision® license is available in 4 versions:**

- **GeoVision® - P**, for Pressumeter data and edition of Pressuremeter test report
- **GeoVision® - F**, for Drilling data
- **GeoVision® - D**, for penetrometer data, DPSH test and control of trench or platform compaction
- **GeoVision® -L**, for permeability test data

**Main Features:**

- Data importation through Flash memory cards used on APAGEO's data loggers
- Manual data input for all kind of data (image, text or numeric), integration of site investigation notes or results (Dynamic penetrometer, water test, pictures...).
- Data exploitation and generation of pressuremeter report according to the EN ISO 22476-4 standard.
- Personalization of geotechnical diagraphy.
- Data exploitation and generation of penetrometer report according to the NF P 94-063 for control of trench or plateform compaction through the penetrodensitographe method's.
- Definition of a database of reference, making easier data sharing and regular savings.
- Compatible with all the latest versions of Windows (32 et 64 Bits).
- Available in french, english, italian, spanish and german

**GEOVISION®  
MANUAL INPUT**

---

The manual data input modulus is available on each versions of the software. It enables to integrate into the diagraphy all site's notes, images, and representative values of geotechnical measures.

For example, it allows creating borehole manually in order to present piezometer, lithological data associated to coring data...

GeoVision® is provided with a database of geotechnical legends that can be filled out or modified.

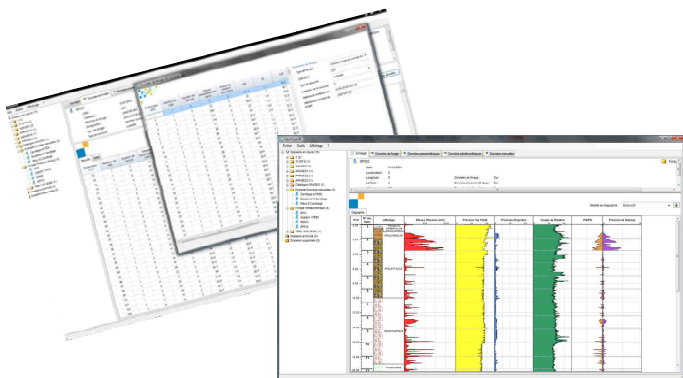
The manual data input is done through an interface similar to Microsoft Excel.

**GEOVISION®  
PRESSUREMETER DATA**

This modulus imports, analyses, calculates and generates industrially the test result.

The double hyperbolic method, announced on the future international standard project is also integrated, as the adjust of the pseudo-elastic zone, for an accurate analyse of test result.

**New:** treatment of cyclic test.



**GEOVISION®  
DRILLING DATA**

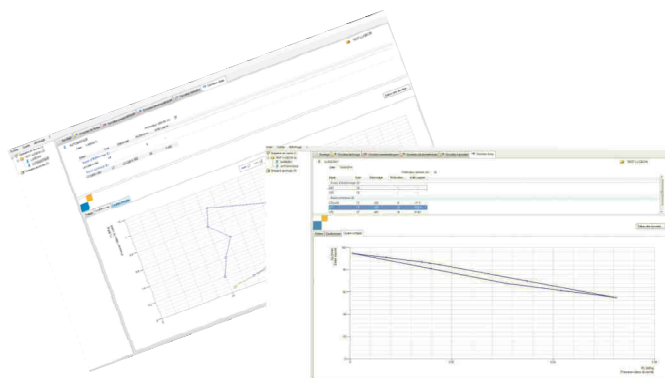
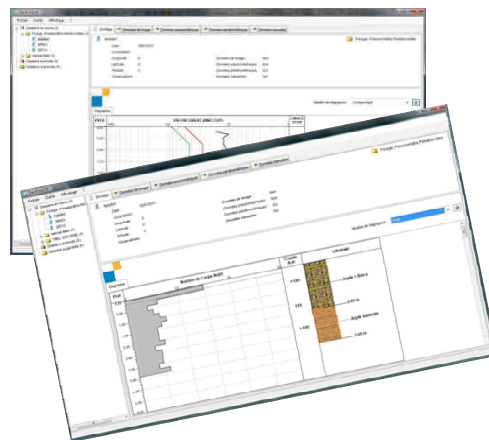
This modulus imports, takes in charge the data and generates the diagraphy report.

Text extraction and importation is possible, simplifying the use of data through standard software.

**GEOVISION®  
PENETROMETER DATA**

This modulus imports, analyses, detects the anomalies and generates the result according to the NF P 94-063 (trench control), ISO 22476-2 (dynamic Penetrometer) standards.

This modulus can work independently in Dynamic Penetrometer mode (number of blow) or in penetrodensitographe mode (depth per blow).



**GEOVISION®  
LUGEOTEST DATA**

Tis modulus imports, analyses, calculates and generates the test result.

**REPORT EDITION**



Reports can be edited on every printer (paper or pdf printer). They can also be saved as an Excel file. The layout is customizable and different models can be saved and then applied to different reports. The diagraphy can also be customized, in a simple and intuitive way.

